

# EM Meter

CONTROL UNIT/ENERGY MANAGEMENT

PRODUCT-NO.: 201675

## Make optimum use of self-generated electricity

Operate your heat pump with electricity generated by your own photovoltaic system. And to keep an eye on the whole process, this electricity meter is just the thing. It measures the electrical feed-in power or reference power at the mains connection of your building – and does so in real time. This data is transmitted via the Ethernet and the home network to the STIEBEL ELTRON energy management system where it is utilised. This way, the system can tell at any time whether there is sufficient solar power for operating your heat pump.

## Combining technology effectively

By cleverly linking electricity meter and energy management, you can optimise your electricity usage and make your system operate even more efficiently. Once the electricity meter has been installed by your qualified contractor, you will reap the benefits of maximum control when it comes to effective use of the electricity you generate yourself.

## The main features

Records data on power exported to and drawn from the grid in real time

---

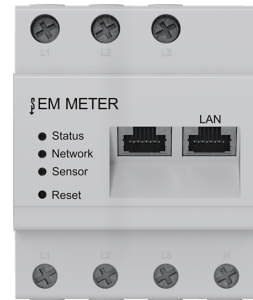
Optimised use of solar power (requires EM Trend energy management software)

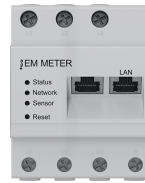
---

3-phase measurement for high accuracy

---

Compatible with standard connections (family house)





Type	EM Meter
Part no.	201675

## Technical data

---

Observe the compatibility list. Please enquire about availability.

---

## **Contact information**

Do you have additional questions? Then please do not hesitate to contact us, we would be only too happy to help:

Call 0151 346 2300

Or send an e-mail to

[sales@stiebel-eltron.co.uk](mailto:sales@stiebel-eltron.co.uk)

Only a qualified contractor should carry out the installation, commissioning, maintenance and repair of this appliance. Where applicable and prior to installation the electricity and/or water utility companies should be notified of your intention to install the product.